

Scissor lift truck **LEH/LEE1000™**

From pallet to shelf in a single operation

Transport and lift from pallet to floor or vehicle floor in a single operation. This gives you quicker handling and avoids heavy lifting. An extra bonus is the built-in ability of the scissor truck to provide a variable-height work surface. Manually-propelled or electrically powered. The electric model LEE1000™ is powered by rechargeable batteries. Recharging is quick and simple, via any wall socket!



LEE1000™



LEH1000™

Scissor lift truck **LEH/LEE1000™**



Short machine length thanks to the positioning of the hydraulic pump and battery.

Benefits and features:

- Easy to handle, with a short machine length because of optimum positioning of battery and hydraulic pump.
- Integrated battery charger with LED indicator.
- Separate charging cable.
- Maintenance free battery and secure battery compartment.
- Stable and safe thanks to stabilisers.
- "Single stage" instead of telescopic cylinder, giving greater stability and significantly reduced risk of leakage.

Technical Details

LEE1000™

Capacity _____ 1000 kg
 Weight without battery ____ 135 kg
 Battery capacity _____ 51 Ah
 Battery voltage _____ 12 V

LEH1000™

Capacity _____ 1000 kg
 Weight _____ 121 kg
 Pump strokes to fully elevated
 fork with/without load ____ 65/28

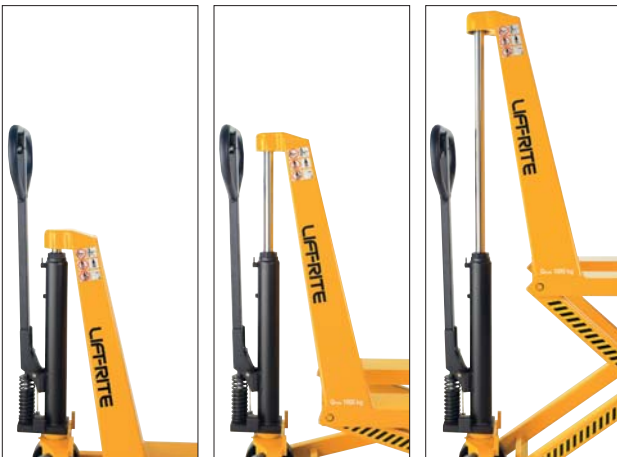
Dimensions

LEE1000™/LEH1000™

Lift height _____ 810 mm
 Height of lowered fork ____ 88 mm
 Height of truck _____ 930 mm
 Width across forks _____ 560 mm
 Fork length _____ 1190 mm
 Total length _____ 1645 mm



The electric scissor lift truck has a built-in charger as standard.



Single-stage cylinder minimizes the risk of leakage. The manual scissor lift truck is fitted with Quick Lift, and can lift 32 mm per stroke of the pump.

